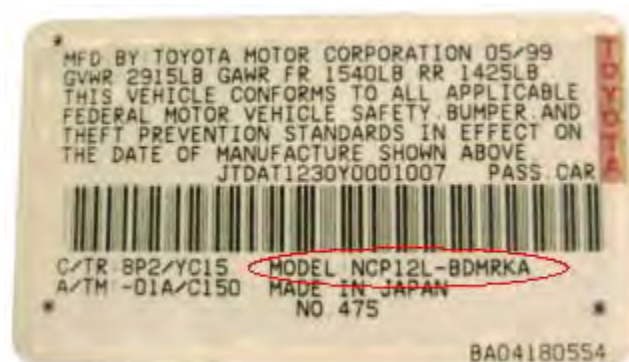




Toyota 4Runner Drive Axle Gear Ratio's

Toyota vehicle model identification comes from the vehicle configuration label which is typically attached to the door latch edge on the driver side door or door pillar.



1996 - 2002 4Runner

Model Code	Ratio
RZN180L-GKMSKA	3.727
RZN180L-GKMSKA	4.100 With P265/70R16
RZN180L-GKPGKA	3.727
RZN180L-GKPGKA	4.100 With P265/70R16
RZN180L-GKPSKA	3.909
RZN180L-GKPSKA	4.300 With P265/70R16
RZN180L-GKPZKA	4.100
RZN185L-GKMGKA	3.909
RZN185L-GKMGKA	4.100 With P265/70R16
RZN185L-GKMSKA	4.100
RZN185L-GKMSKA	4.556 With P265/70R16
RZN185L-GKPGKA	3.909
RZN185L-GKPGKA	4.100 With P265/70R16
RZN185L-GKPGKA	4.300 Option With P265/70R16
RZN185L-GKPSKA	4.100
RZN185L-GKPSKA	4.556 With P265/70R16
RZN185L-GKPZKA	4.100

RZN185L-GKPZKA	4.300 Option
VZN180L-GKPSKA	3.727
VZN180L-GKPSKA	4.100 With P265/70R 16
VZN180L-GKPGKA	3.727
VZN180L-GKPGKA	4.100 With P265/70R 16
VZN180L-GKPZKA	4.100
VZN185L-GKMGKA	3.909
VZN185L-GKMGKA	4.100 With P265/70R16
VZN185L-GKPGKA	3.909
VZN185L-GKPGKA	4.100 With P265/70R16
VZN185L-GKPGKA	4.300 Option
VZN185L-GKPSKA	4.100
VZN185L-GKPSKA	4.300 With P265/70R16
VZN185L-GKPZKA	4.100
VZN185L-GKPZKA	4.300 With P265/70R16
RZN180L-GKMSKA	3.727
RZN180L-GKMSKA	4.100 With P265/70R16
RZN180L-GKPGKA	3.727
RZN180L-GKPGKA	4.100 With P265/70R16
RZN180L-GKPSKA	3.909
RZN180L-GKPSKA	4.300 With P265/70R16
RZN180L-GKPZKA	4.100
RZN185L-GKMGKA	3.909
RZN185L-GKMGKA	4.100 With P265/70R16
RZN185L-GKMSKA	4.100
RZN185L-GKMSKA	4.556 With P265/70R16
RZN185L-GKPGKA	3.909
RZN185L-GKPGKA	4.100 With P265/70R16
RZN185L-GKPGKA	4.300 Option With P265/70R16
RZN185L-GKPSKA	4.100
RZN185L-GKPSKA	4.100 With P265/70R16
RZN185L-GKPZKA	4.100
RZN185L-GKPZKA	4.300 Option

